


UNIT 9 OUR PLANET

1 VOCABULARY: the weather

A Complete the sentences with the words from the box.

stormy windy rains snows sunny foggy

- 1 We usually go skiing when it _____.
- 2 The best time to fly a kite is when it is _____.
- 3 It's nice to sit on the beach when it is _____.
- 4 Sometimes there is thunder and lightning when it is _____.
- 5 You should drive carefully when it is very _____.
- 6 It's not much fun playing football when it _____.

B  **21** Listen to the conversations. Write the weather words you hear.

Conversation 1:

Conversation 3:

Conversation 2:

Conversation 4:

C Choose the correct option to complete each sentence.

- 1 Look at the **snow** / **snowy** outside!
- 2 It isn't **rain** / **raining** right now.
- 3 It will be **storm** / **stormy** tomorrow.
- 4 Listen to the **wind** / **windy**!
- 5 Does it **rain** / **rainy** a lot in your country?
- 6 It's very **cloud** / **cloudy** today.

2 GRAMMAR: *may, might and will* for future possibility

A Choose the correct option.

- 1 I'm sure you **may** / **will** have a good time at the concert.
- 2 I'm not sure, but I **may** / **will** be home early tonight.
- 3 We **might** / **will** definitely meet again.
- 4 They **might** / **will** go on holiday this year, but they haven't booked it yet.
- 5 Are you sure it **may** / **will** rain tomorrow?
- 6 We don't know yet, but it **might** / **will** be very cold tonight.

B There is one mistake in each sentence. Find and correct it.

- 1 We might to go swimming this weekend.

- 2 I'm sure it willn't rain today.

- 3 We may to get a lot of snow this winter.

- 4 I may definitely go to the beach next weekend.

- 5 They not might go on holiday this year.

- 6 It will be probably sunny tomorrow.



C Make sentences about the pictures. Use *may*, *might* or *will*.
More than one answer is possible.



- 1 a) not find a new job (*not sure*)
b) get some good advice (*sure*)



- 2 a) go into the shop (*sure*)
b) buy a new dress (*not sure*)



- 3 a) not finish her work today (*sure*)
b) be very tired when she goes home (*not sure*)

WHAT'S RIGHT?

We might not to have time for coffee.

1 a) *He might not find a new job.*

b) _____

2 a) _____

b) _____

3 a) _____

b) _____

3 COMMUNICATION STRATEGY: interrupting

A Write the words in the correct order to make ways of interrupting.

1 me / excuse / for / I / interrupt / you / a / can / second / ?

Excuse me, _____

2 ask / question / quick / can / I / a / me / excuse / ?

3 interrupt / sorry / what / the / homework / was / to / ?

B 22 Listen to the conversations. Use key words to complete the table.

	Reason for interrupting	What is the topic of the main conversation?
Conversation 1	_____	_____
Conversation 2	_____	_____
Conversation 3	_____	_____

4 VOCABULARY: the natural world

A Label the map with the names of the natural features from the box.

mountain forest sea field hill river island lake



B Complete the descriptions with words from Exercise A.

- 1 Australia is the largest _____ in the world.
- 2 Baikal is a large _____ in central Russia.
- 3 Everest is the highest _____ in the Himalayas.
- 4 The Mediterranean is the _____ between Europe and North Africa.
- 5 The Nile is a _____ that runs through Egypt.
- 6 The Amazon is a large tropical _____ in South America.

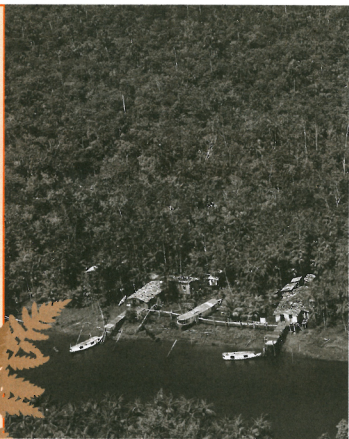
5 READING: understanding meaning from context

A Quickly read this article, ignoring any words or phrases you don't know. Then read the sentences and choose T (true) or F (false).

The Amazon Rainforest

The Amazon Rainforest is located in South America near the Equator. The forest covers several countries including Brazil, Peru and Colombia. It is the largest rainforest in the world and is home to millions of different animal and insect species, as well as over 40,000 plant species. These include many **unknown** plants and animals that may be useful in research for new medicines.

Some environmentalists predict that the rainforest may not **survive** for much longer. The main problem is **deforestation**. Farmers are cutting down trees to make farms and fields. People are also cutting down trees to build homes. Global warming is a problem, too. Some experts suggest that a rise in world temperatures might **destroy** around 75% of the Amazon Rainforest. If this happens, many plants and animals will lose their natural **habitat** and we will lose an important part of our planet's ecosystem.



- 1 The Amazon Rainforest is larger than other forests. T / F
- 2 Millions of animals live in the Amazon Rainforest. T / F
- 3 Farms help to protect the rainforest. T / F
- 4 Climate change will affect the Amazon Rainforest. T / F

B Read the article again and look at the words in bold. Look at the context carefully and choose the correct meaning.

- | | | |
|-----------------|---------------------|-------------------|
| 1 unknown | a) natural | b) new |
| 2 survive | a) continue to live | b) get bigger |
| 3 deforestation | a) losing trees | b) planting trees |
| 4 destroy | a) improve | b) kill |
| 5 habitat | a) home | b) climate |

6 GRAMMAR: *will and going to*


A Match the sentences 1–6 to the correct description a–c.

- I'll drive when we go to the mountains this weekend.
- I'm going to help tidy up the beach this weekend.
- Climate change will continue to cause floods.
- We're going to hike in the forest next week.
- Many regions are going to have a lot of rain this year.
- I'll try to do more to stop climate change.

- a) make a prediction about the future
b) talk about future plans and intentions
c) make spontaneous offers and decisions

B How do you think climate change will affect us in the future? Complete the sentences with *will* or *won't*.

- Pollution _____ get worse.
- The earth's climate _____ get warmer.
- The global population _____ increase.
- Some countries _____ have enough food.
- Some animal species _____ survive.
- Icebergs _____ melt.

C  **23** Complete the conversations with the correct form of *will* or *going to* and the verb in brackets. Then listen and check your answers.

Conversation 1

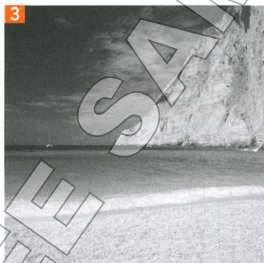
- A: What (1) _____ you _____ (do) to help the environment?
B: I (2) _____ (not drive) my car. I'm going to use public transport instead. What about you?
A: We (3) _____ (save) electricity by using solar panels on our house.
B: That's a good idea! (4) _____ there _____ (be) enough sunshine?
A: Yes. Even though there (5) _____ (not be) as much sunshine in the winter, there should be enough daylight.

Conversation 2

- A: I (6) _____ (join) this new climate change organisation.
B: Really? What (7) _____ they _____ (do) to stop climate change?
A: They (8) _____ (make) simple changes. For example, I (9) _____ (cycle) to work and I (10) _____ (not use) plastic bags.
B: That's a good idea! Maybe I (11) _____ (do) that, too!

Listen and write

A Look at the pictures. In which place would you most like to live?



B **24** Listen to three people talking about their ideal place to live. Match each person to the correct picture in Exercise A.

Person 1: _____

Person 2: _____

Person 3: _____

C Listen again and make notes.

	1	2	3
Country / City			
Natural features / Climate			
Advantages			
Disadvantages			
Lifestyle activities			

D What is your ideal place to live? Choose one place in the world and describe it. Make notes.

Kind of place (e.g. town, village, island, etc.)

Natural features / Climate

Advantages / Disadvantages

Lifestyle activities

Over to You

E Use your notes from Exercise D to write a paragraph in your notebook about your ideal place to live and explain why.

WRITING TUTOR

My ideal place to live is ...

My dream home is in/on/near a ...

Some people might want to live in/on/near a ... , but I'm going to live in/on/near a ...

DOWN TIME

A Choose the odd one out.

- | | | | |
|----------|----------|--------|-------|
| 1 island | hill | field | snow |
| 2 rain | wind | island | fog |
| 3 lake | mountain | sea | river |
| 4 sunny | rain | snow | hail |
| 5 windy | weather | rainy | foggy |

B Look at the clues and complete the crossword.

