

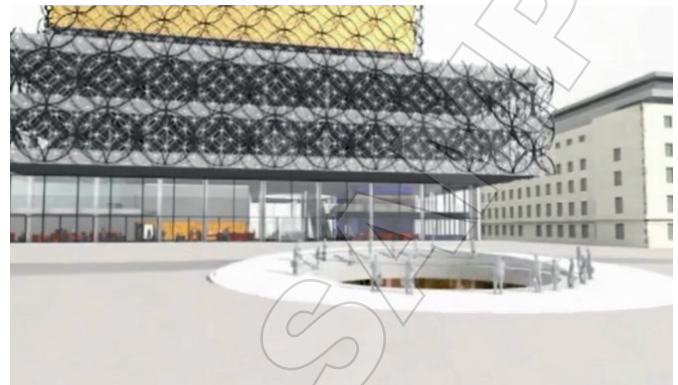
Unit 2 >>> The whole story

- 1 a** Watch the video without sound. Write as much as you remember about the building. Work in pairs to compare your ideas.

What building is it?

What's outside the building?

What's inside the building?



- b** Watch the video again, this time with sound. Complete your notes.

- 2 a** Complete the questionnaire about the building. Tick (✓) the answers.

	Yes	No
1 The metal circles outside the building are a reference to the local metal and jewellery industries.		
2 The amphitheatre is on the higher level.		
3 The music zone only has classical music.		
4 There is nothing digital in the library – only books and magazines.		
5 The building has 10 levels.		

- b** Watch the video again. Correct the information that was wrong in Exercise 2a and write it below.

.....

.....

.....

.....

.....



- 3 a** Watch the first part of the video again. Make a drawing of the amphitheatre area. Include as much detail as you can.

- b** Watch the video again. Work in pairs. Compare your sketches and check them against the video. What did you forget to include? What was difficult to draw?

- 4 a** Choose a public building where you live. Write notes for a voice-over about at least three areas in it and what you can do there. Choose interesting places inside or outside the building.

.....

.....

.....

- b** Work in new pairs. Imagine you are giving a tour of the building. Read your voice-over for your partner to draw the place from your description. Discuss your sketches with your partner.